



## Instructions for Use Suprascapular Block Simulator - MS2-SSC

### 1. Preparation

#### TRAINING GOAL #1: SETTING UP THE ULTRASOUND MACHINE

- Needle: Use sharp bevel needles, best with  $\leq 22G$  best with small diameter (25G). The use of small gauge needles increases the lifespan of the simulators.
- Sterile water ONLY when practicing injections
- Transducer: Linear - high-frequency transducer
- Depth: 3-4 cm
- **IMPORTANT: INCREASE the ultrasound gain BEFORE SCANNING (simulators are somewhat less echogenic and require more gain to obtain images similar to the human tissue)**

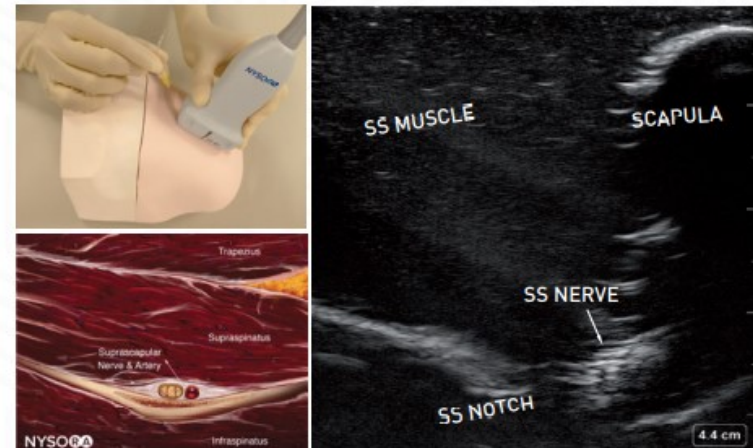
### 2. Scanning

#### TRAINING GOAL #2: ANATOMY RECOGNITION

Position the transducer in a coronal plane over the shoulder, parallel to the scapula. Tilt the transducer anteriorly to improve imaging the floor of the suprascapular fossa and the suprascapular notch.

Identify the following structures:

- Suprascapular notch
- Suprascapular nerve
- Suprascapular muscle

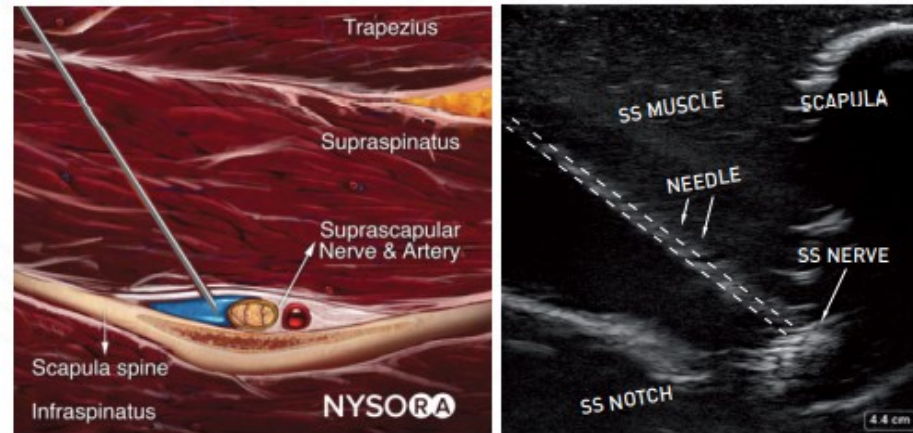




### 3. Procedure

#### TRAINING GOAL #3: PRACTICE NEEDLE INSERTION INTO RELEVANT ANATOMY

Insert the needle in-plane in a medial to lateral direction until the tip is located in the notch below the nerve.



#### PRODUCT CAUTIONS

- Read and follow Instructions and recommendations. Please take extreme care when using needles so as not to accidentally injure yourself during training.
- Avoid placing the simulator near a heat source as this will potentially lead to deformation or damage to the unit.
- Avoid placing the simulator on printed material or rough surfaces as the print or surface shape may transfer to the unit.

#### CARE AND MAINTENANCE

- Clean the simulator with alcohol or soap and water before storage. Allow dry naturally or dab dry with a lint-free cloth.
- Store at room temperature.
- Never place objects on top of the simulator while in storage.

