



Instructions for Use

Suprascapular Block Simulator

MS2-SSC

1. Preparation

TRAINING GOAL #1: SETTING UP THE ULTRASOUND MACHINE

- Needle: Use sharp bevel needles, best with $\leq 22G$ best with small diameter (25G). The use of small gauge needles increases the lifespan of the simulators.
- Sterile water ONLY when practicing injections
- Transducer: Linear - high-frequency transducer
- Depth: 3-4 cm
- **IMPORTANT: INCREASE the ultrasound gain BEFORE SCANNING (simulators are somewhat less echogenic and require more gain to obtain images similar to the human tissue)**

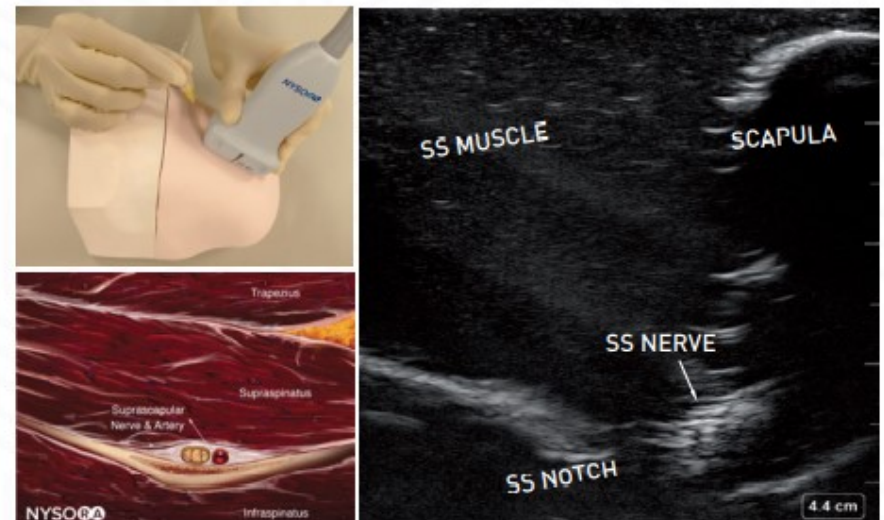
2. Scanning

TRAINING GOAL #2: ANATOMY RECOGNITION

Position the transducer in a coronal plane over the shoulder, parallel to the scapula. Tilt the transducer anteriorly to improve imaging the floor of the suprascapular fossa and the suprascapular notch.

Identify the following structures:

- Suprascapular notch
- Suprascapular nerve
- Suprascapular muscle

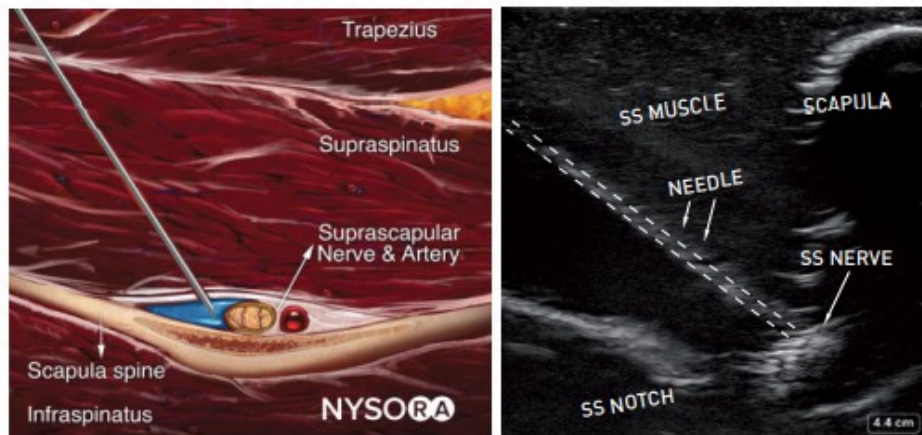




3. Procedure

TRAINING GOAL #3: PRACTICE NEEDLE INSERTION INTO RELEVANT ANATOMY

Insert the needle in-plane in a medial to lateral direction until the tip is located in the notch below the nerve.



WARRANTY

Valkyrie products are made to the highest standards. Your simulator is warranted to you by Valkyrie for six months from the date of purchase against manufacturing defects in workmanship and materials. During the warranty period a defective simulator will be replaced either with a new or reconditioned unit. This warranty covers normal consumer usage and does not cover damage incurred through use not consistent with the simulators design. Failure that results from misuse or neglect is not covered under this warranty.

PRODUCT CAUTIONS

Read and follow Instructions and recommendations. Please take extreme care when using needles so as not to accidentally injure yourself during training.

Avoid placing the simulator near a heat source as this will potentially lead to deformation or damage to the unit.

Avoid placing the simulator on printed material or rough surfaces as the print or surface shape may transfer to the unit.

CARE AND MAINTENANCE

Clean the simulator with alcohol or soap and water before storage. Allow dry naturally or dab dry with a lint-free cloth.

Store at room temperature.

Never place objects on top of the simulator while in storage.

