



Instructions for Use

Vascular Access Subclavian Simulator

MS2-VASC



1. Preparation

TRAINING GOAL #1 SETTING UP

- Use sharp bevel needles. 22 G or 25G are ideal as small gauge needles will ensure longer life of the simulator.
- Transducer: Linear-High Frequency
- Depth: 3-5cm
- Use ultrasound gel for best image quality
- Ensure that the vessels are filled with clean sterile water and air free. To fill remove all caps, orientate the simulator so that the vessels are vertical. Fill each tube from the bottom to expel all air. Replace the upper cap before inverting the model. Remove the syringe and replace the lower cap.
- Use clean sterile water when injecting. Always aspirate to remove water when finished
- Drain all vessels before storage.

IMPORTANT: INCREASE the ultrasound GAIN to maximum before scanning and then adjust the GAIN down to obtain the best image.

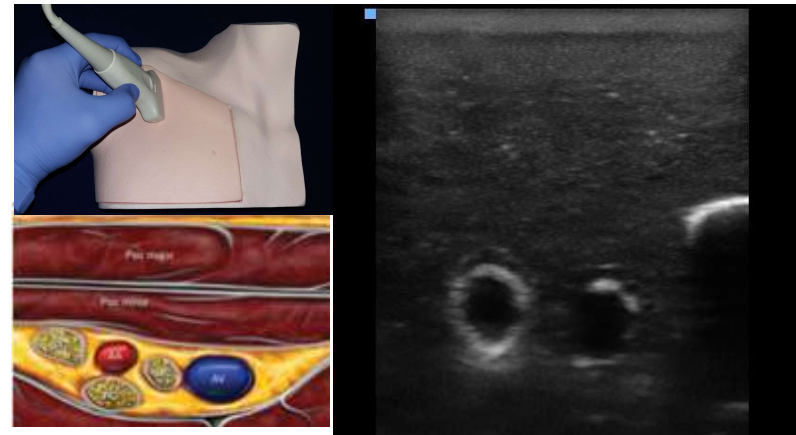
2. Scanning

TRAINING GOAL #2 ANATOMY RECOGNITION (OUT OF PLANE)

Place the transducer in a Sagittal (longitudinal) orientation at the level of the coracoids process.

Identify the following landmarks:

- Subclavian artery (cephalad)
- Subclavian Vein (caudad)

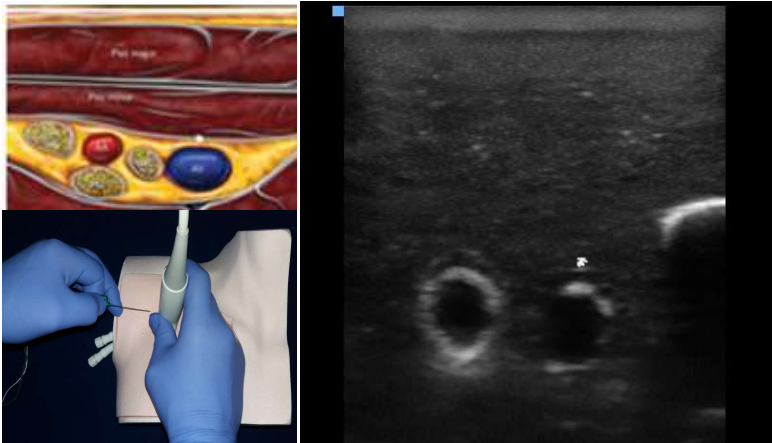




3. Procedure

TRAINING GOAL #3 ACCURATE NEEDLE PLACEMENT (OUT OF PLANE)

Centralize the subclavian vein in the ultrasound image. Place the needle central and perpendicular to the transducer probe at approximately the same distance away from the probe as the depth of the target vessel (3-4cm). Advance the needle at an angle of approximately 45 degrees until the tip is visible on the ultrasound image. Adjust the angle of the needle if required and slide or tilt the ultrasound beam away from the needle until the tip disappears. Repeat as necessary until the tip is within the target vessel.



WARRANTY

Valkyrie products are made to the highest standards. Your simulator is warranted to you by Valkyrie for six months from the date of purchase against manufacturing defects in workmanship and materials. During the warranty period a defective simulator will be replaced either with a new or reconditioned unit. This warranty covers normal consumer usage and does not cover damage incurred through use not consistent with the simulators design. Failure that results from misuse or neglect is not covered under this warranty.

PRODUCT CAUTIONS

Read and follow Instructions and recommendations. Please take extreme care when using needles so as not to accidentally injure yourself during training.

Avoid placing the simulator near a heat source as this will potentially lead to deformation or damage to the unit.

Avoid placing the simulator on printed material or rough surfaces as the print or surface shape may transfer to the unit.

CARE AND MAINTENANCE

Clean the simulator with alcohol or soap and water before storage. Allow dry naturally or dab dry with a lint-free cloth.

Store at room temperature.

Never place objects on top of the simulator while in storage.

