



## Instructions for Use Popliteal Block Simulator MS2-POP



### 1. Preparation

#### TRAINING GOAL #1 SETTING UP

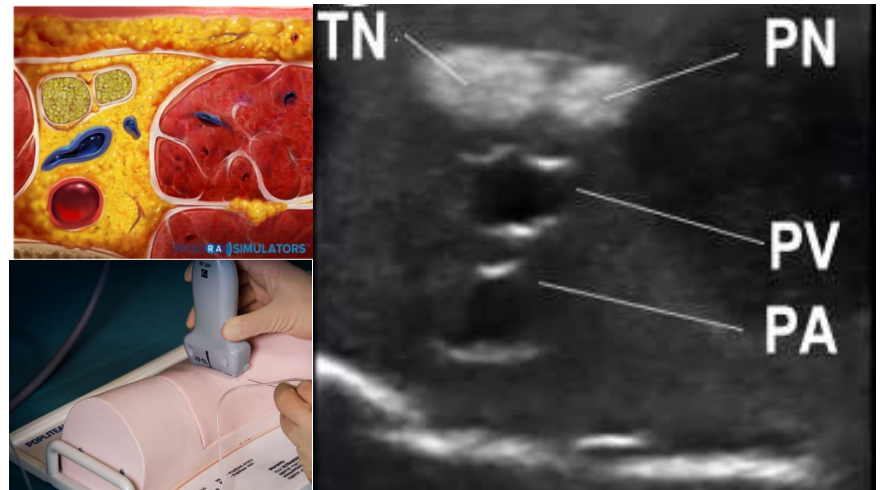
- **Ultrasound:** INCREASE the ultrasound GAIN to maximum before scanning then adjust the GAIN down to obtain the best image.
- **Needle:** Use sharp bevel needles. 22- 25G are ideal as small gauge needles will ensure longer life of the simulator. 100mm needle length.
- **Transducer:** Linear-High Frequency or Curved –Low frequency
- Depth: 4-5cm
- Use ultrasound gel for best image quality
- Use **clean sterile water** when injecting. **Always aspirate** to remove water when finished.

### 2. Scanning

#### TRAINING GOAL #2 ANATOMY RECOGNITION

Place the probe at the level of the popliteal crease and identify the popliteal artery and vein. Observe the tibial and peroneal nerves inferior to identified vessels. Slide the probe proximally until the tibial and common peroneal nerve join.

**Identify:** The common peroneal (PN) and tibial nerves (TN)  
The popliteal artery and vein (PA, PV).

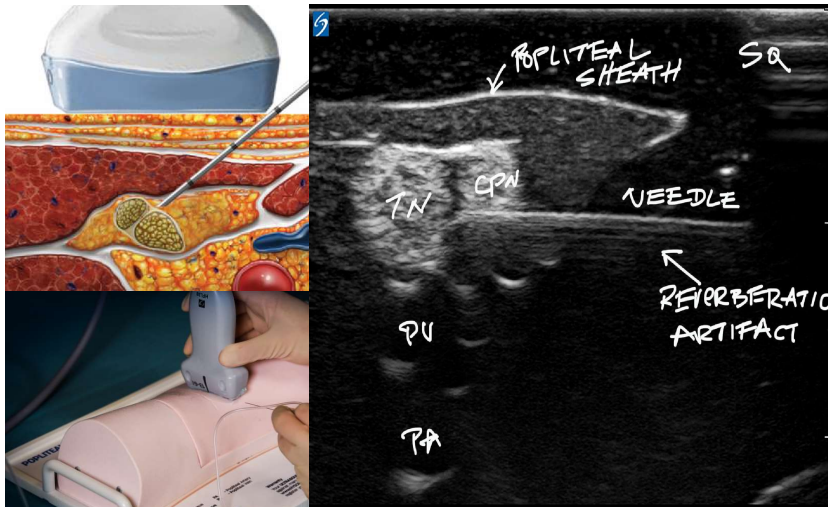




### 3. Procedure

#### TRAINING GOAL #3 ACCURATE NEEDLE PLACEMENT

At the level where the tibial and common peroneal join, insert the needle in-plane from lateral to medial and advance the needle into the fascial plane surrounding both nerves. The flatter the approach the easier it will be to visualize the needle.



#### WARRANTY

Valkyrie products are made to the highest standards. Your simulator is warranted to you by Valkyrie for six months from the date of purchase against manufacturing defects in workmanship and materials. During the warranty period a defective simulator will be replaced either with a new or reconditioned unit. This warranty covers normal consumer usage and does not cover damage incurred through use not consistent with the simulators design. Failure that results from misuse or neglect is not covered under this warranty.

#### PRODUCT CAUTIONS

Read and follow Instructions and recommendations. Please take extreme care when using needles so as not to accidentally injure yourself during training.

Avoid placing the simulator near a heat source as this will potentially lead to deformation or damage to the unit.

Avoid placing the simulator on printed material or rough surfaces as the print or surface shape may transfer to the unit.

#### CARE AND MAINTENANCE

Clean the simulator with alcohol or soap and water before storage. Allow dry naturally or dab dry with a lint-free cloth.

Store at room temperature.

Never place objects on top of the simulator while in storage.

